



AGENDA OF THE TRAFFIC, BICYCLE, & PEDESTRIAN COMMISSION

MONDAY, MAY 18, 2026, 5:00 PM

In person at City Hall, Room 310.

Virtual attendance also available via Zoom.

A. Zoom Meeting Information.

I. Join Zoom Meeting Online:

<https://us02web.zoom.us/j/89499094048?pwd=wKBCsSCDqJMr2wequCnDIL0Ha5ga9A.1>

Or call in by phone: +1 312 626 6799

Meeting ID: 894 9909 4048

Passcode: 770536

If you wish to leave a comment for this public meeting, please fill out the online [Comment Form](#) prior to the meeting. More detailed [Zoom Instructions](#) can be found online.

B. Roll Call.

- I. Members: Chairperson Kasha Huntowski, Alder Ben Delie, Stephen Larsen, Patrick Sorelle, Jesse Wellens, Tarl Knight, and Traffic Sergeant Sean Hamill.

C. Approval of the Agenda.

- I. Approval of the agenda for the Monday, May 18, 2026, meeting of the Traffic, Bicycle, & Pedestrian Commission.

D. Approval of Minutes.

- I. Approval of the minutes from the Monday, April 20, 2026, Traffic, Bicycle, & Pedestrian Commission meeting.

E. Regular Business.

- I. *General Business*: Consideration with possible action on the report by the Police Department on the May 2026 Traffic Enforcement Unit Traffic Safety Plan. (All Alders)

2. *General Business*: Consideration with possible action on a request by the Traffic Engineer to remove the traffic signal at Dousman Street and Oneida Street. (District 10)
3. *General Business*: Consideration with possible action on a request by the Traffic Engineer to remove the parking restrictions adjacent to Elmore Elementary School (615 Ethel Avenue). (District 10)
4. *General Business*: Consideration with possible action on a request by the Traffic Engineer to remove the parking restrictions adjacent to MacArthur Elementary School (1331 Hobart Drive). (District 11)

F. Informational.

1. Next Meeting: Monday, June 15, 2026

G. Adjournment.

1. Adjournment of the Monday, May 18, 2026, meeting of the Traffic, Bicycle, & Pedestrian Commission.

- 1) THIS MEETING IS RECORDED: THE VIDEO OF THIS MEETING AND MINUTES ARE AVAILABLE ONLINE AT www.greenbaywi.gov
- 2) ACCESSIBILITY: Any person wishing to attend who requires special accommodation because of a disability, should contact the City Safety Manager at 920-448-3125 at least 48 hours before the scheduled meeting time so that arrangements can be made.
- 3) QUORUM: Please take notice that a majority or quorum of the Common Council will attend this Traffic, Bicycle, & Pedestrian Commission meeting and will constitute a meeting of the Common Council for purposes of discussion and information gathering relative to this agenda.
- 4) REPRESENTATION: The party requesting the communication, or their representative, should be present at this meeting.



Report to the
Traffic, Bicycle and Pedestrian Commission
of the City of Green Bay

MEETING DATE

May 18, 2026

PREPARED BY

AGENDA ITEM # D.I

Approval of the minutes from the Monday, April 20, 2026, Traffic, Bicycle, & Pedestrian Commission meeting.

BACKGROUND

RECOMMENDATION

To approve.

FISCAL IMPACT

ATTACHMENTS

- I. TBPC Minutes 4.20.2026



MINUTES OF THE TRAFFIC, BICYCLE, & PEDESTRIAN COMMISSION

MONDAY, APRIL 20, 2026, 5:00 PM

In person at City Hall, Room 310.

Virtual attendance also available via Zoom.

A. ZOOM MEETING INFORMATION.

- I. Join Zoom Meeting Online:

<https://us02web.zoom.us/j/89499094048?pwd=wKBCsSCDqJMr2wequCnDIL0Ha5ga9A.1>

Or call in by phone: +1 312 626 6799

Meeting ID: 894 9909 4048

Passcode: 770536

If you wish to leave a comment for this public meeting, please fill out the online [Comment Form](#) prior to the meeting. More detailed [Zoom Instructions](#) can be found online.

B. ROLL CALL.

- I. Members: Chairperson Kasha Huntowski, Alder Craig Stevens, Stephen Larsen, Patrick Sorelle, Jesse Wellens, Tarl Knight, and Traffic Sergeant Sean Hamill.

Present Not Voting: Kasha Huntowski

Present and Voting: Patrick Sorelle, Stephen Larsen, Jesse Wellens, Tarl Knight, Craig Stevens

Excused: Sean Hamill

Others: Traffic Engineer Tom Schuurmans, Assistant Director of Public Works James Brunette, Recording Secretary Brooke Jubert

C. APPROVAL OF THE AGENDA.

- I. Approval of the agenda for the Monday, April 20, 2026, meeting of the Traffic, Bicycle, & Pedestrian Commission.

Moved by Commissioner Stephen Larsen, seconded by Alder Craig Stevens to approve the April 20, 2026, Traffic, Bicycle, & Pedestrian Commission meeting agenda.

Yes: Stephen Larsen, Jesse Wellens, Tarl Knight, Patrick Sorelle, Craig Stevens

No: None

Abstain: None

Voice vote. Motion carried.

D. APPROVAL OF MINUTES.

- I. Approval of the minutes from the Monday, February 16, 2026, Traffic, Bicycle, & Pedestrian Commission meeting.

Moved by Commissioner Jesse Wellens, seconded by Commissioner Stephen Larsen to approve the February 16, 2026, Traffic, Bicycle, & Pedestrian Commission meeting minutes.

Yes: Stephen Larsen, Jesse Wellens, Tarl Knight, Patrick Sorelle

No: None

Abstain: None

Voice vote. Motion carried.

E. REGULAR BUSINESS.

- I. *General Business*: Consideration with possible action on the March and April 2026 reports by the Police Department on the monthly Traffic Enforcement Unit Traffic Safety Plans. (All Alders)

Moved by Commissioner Tarl Knight, seconded by Commissioner Patrick Sorelle to receive and place on file the March and April 2026 reports by the Police Department on the monthly Traffic Enforcement Unit Traffic Safety Plans.

Yes: Stephen Larsen, Jesse Wellens, Tarl Knight, Patrick Sorelle, Craig Stevens

No: None

Abstain: None

Voice vote. Motion carried.

2. *General Business*: Report by the Police Department of the 2026 1st quarter serious injury and fatal crashes. (All Alders)

Moved by Commissioner Jesse Wellens, seconded by Commissioner Patrick Sorelle to receive and place on file the report by the Police Department of the 2026 1st quarter serious

injury and fatal crashes.

Yes: Stephen Larsen, Jesse Wellens, Tarl Knight, Patrick Sorelle, Craig Stevens

No: None

Abstain: None

Voice vote. Motion carried.

3. *Refer Back from Initial Request on February 16, 2026:* Consideration with possible action on the communication by Ald. Johnson (District 9) to remove or modify the "No Stopping or Standing 12 A.M. to 3 A.M." parking condition on Washington Street. (PC-26-03)

Moved by Commissioner Tarl Knight, seconded by Commissioner Stephen Larsen to open the floor for discussion.

Moved by Commissioner Stephen Larsen, seconded by Alder Craig Stevens to close the floor.

Moved by Commissioner Stephen Larsen, seconded by Commissioner Patrick Sorelle to reopen the floor for discussion.

Moved by Commissioner Alder Craig Stevens, seconded by Commissioner Tarl Knight to close the floor.

Moved by Alder Craig Stevens, seconded by Commissioner Stephen Larsen to approve the request by Ald. Johnson (District 9) to modify the "No Stopping or Standing 12 A.M. to 3 A.M." parking condition on Washington Street as follows on a 90-day trial:

- A. Remove the NO STOPPING NO STANDING MIDNIGHT TO 3:00 AM (Saturday & Sunday) restriction in the 200 block of N. Washington Street.
- B. Remove the NO STOPPING NO STANDING MIDNIGHT TO 3:00 AM (Saturday & Sunday) restriction in the 100 block of S. Washington Street.
- C. Create a NO STOPPING NO STANDING MIDNIGHT TO 3:00 AM (Saturday & Sunday) restriction in the 200 block of N. Washington Street from Doty Street to a point 260 feet north of Doty Street.
- D. Remove the 5 MINUTE LOADING ZONE (7:00 AM-11:00 PM) from a point 80 feet south of E. Walnut Street to a point 195 feet south of E. Walnut Street.
- E. Create a NO PARKING 5 MINUTE LOADING ZONE ONLY from a point 80 feet south of E. Walnut Street to a point 195 feet south of E. Walnut Street.

(PC-26-03)

Yes: Stephen Larsen, Jesse Wellens, Patrick Sorelle, Tarl Knight, Craig Stevens

No: None

Abstain: None

Voice vote. Motion carried.

4. *General Business:* Consideration with possible action on a request by the Traffic Engineer, on behalf of Freedom House Ministries, to create a Bus Loading Zone on Saint Anthony Drive adjacent to its facility located at 2997 Saint Anthony Drive. (Districts 1 & 6)

Moved by Alder Craig Stevens, seconded by Commissioner Stephen Larsen to approve the request by the Traffic Engineer, on behalf of Freedom House Ministries, to create a Bus Loading Zone on Saint Anthony Drive adjacent to its facility located at 2997 Saint Anthony Drive.

Yes: Stephen Larsen, Jesse Wellens, Tarl Knight, Patrick Sorelle, Craig Stevens

No: None

Abstain: None

Voice vote. Motion carried.

5. *General Business*: Consideration with possible action on a request by the Traffic Engineer to restrict parking on both sides of the West Mason Street south frontage road on behalf of Chili's Restaurant located at 2363 West Mason Street. (District 11)

Moved by Alder Craig Stevens, seconded by Commissioner Stephen Larsen to approve the request by the Traffic Engineer to restrict parking on both sides of the West Mason Street south frontage road on behalf of Chili's Restaurant located at 2363 West Mason Street.

Yes: Stephen Larsen, Jesse Wellens, Tarl Knight, Patrick Sorelle, Craig Stevens

No: None

Abstain: None

Voice vote. Motion carried.

6. *General Business*: Consideration with possible action on a request by the Traffic Engineer to remove the traffic signal at Shawano Avenue (STH 29) and Siegler Street. (Districts 10 & 11)

Moved by Commissioner Jesse Wellens, seconded by Commissioner Patrick Sorelle to approve the request by the Traffic Engineer to remove the traffic signal at Shawano Avenue (STH 29) and Siegler Street.

Yes: Stephen Larsen, Jesse Wellens, Tarl Knight, Patrick Sorelle, Craig Stevens

No: None

Abstain: None

Voice vote. Motion carried.

7. *General Business*: Consideration with possible action on a request by the Traffic Engineer to remove the traffic signal at Dousman Street and Taylor Street. (District 10)

Moved by Alder Craig Stevens, seconded by Commissioner Stephen Larsen to approve the request by the Traffic Engineer to remove the traffic signal at Dousman Street and Taylor Street.

Yes: Stephen Larsen, Jesse Wellens, Tarl Knight, Patrick Sorelle, Craig Stevens

No: None

Abstain: None
Voice vote. Motion carried.

8. *General Business*: Consideration with possible action on a request by the Traffic Engineer to restrict parking on the south side of Liberty Street west of Ridge Road. (District 8)

Moved by Commissioner Stephen Larsen, seconded by Commissioner Jesse Wellens to approve the request by the Traffic Engineer to restrict parking on the south side of Liberty Street west of Ridge Road.

Yes: Stephen Larsen, Jesse Wellens, Tarl Knight, Patrick Sorelle, Craig Stevens
No: None
Abstain: None
Voice vote. Motion carried.

F. INFORMATIONAL.

- I. Next Meeting: Monday, May 18, 2026

G. ADJOURNMENT.

- I. Adjournment of the Monday, April 20, 2026, meeting of the Traffic, Bicycle, & Pedestrian Commission.

Moved by Alder Craig Stevens, seconded by Commissioner Jesse Wellens to adjourn the April 20, 2026, meeting of the Traffic, Bicycle, & Pedestrian Commission.

Yes: Stephen Larsen, Tarl Knight, Jesse Wellens, Patrick Sorelle, Craig Stevens
No: None
Abstain: None
Voice vote. Motion carried.



Report to the
Traffic, Bicycle and Pedestrian Commission
of the City of Green Bay

MEETING DATE

May 18, 2026

PREPARED BY

AGENDA ITEM # E.1

General Business: Consideration with possible action on the report by the Police Department on the May 2026 Traffic Enforcement Unit Traffic Safety Plan. (All Alders)

BACKGROUND

RECOMMENDATION

to approve

FISCAL IMPACT

ATTACHMENTS

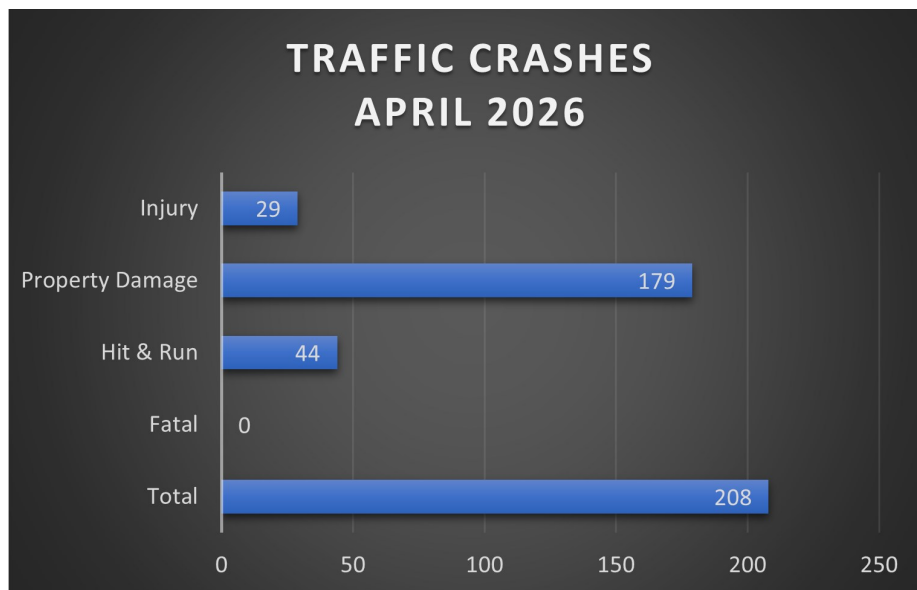
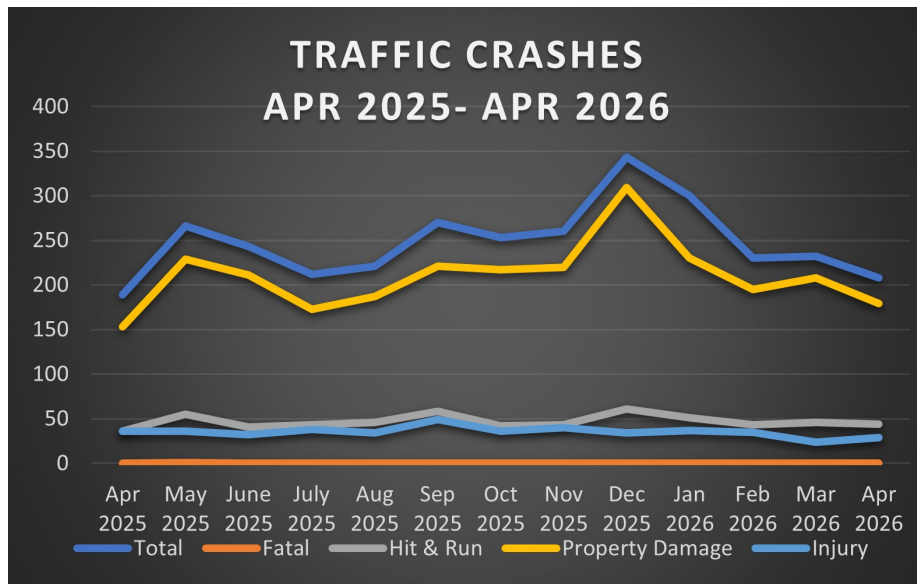
- I. Traffic Safety Plan May 2026



Traffic Safety Plan

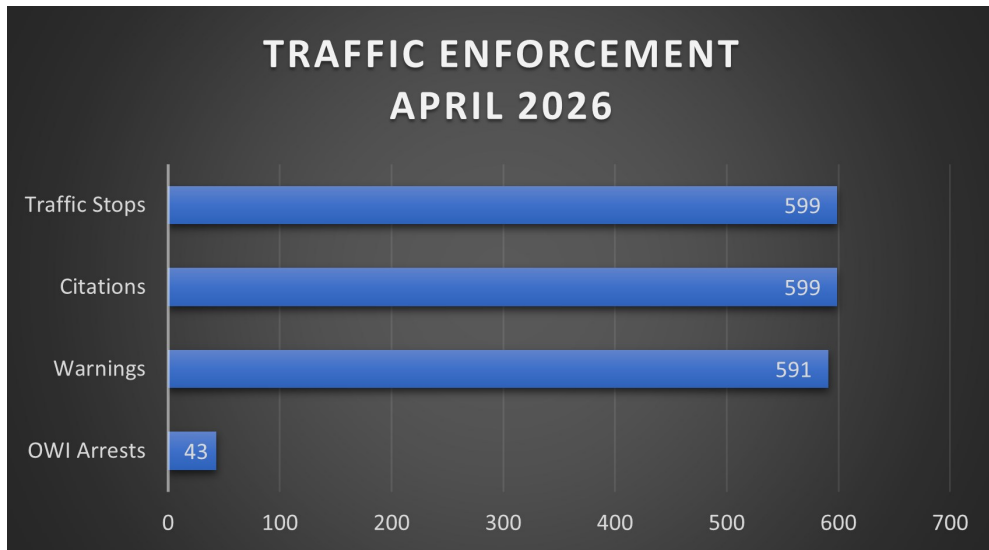
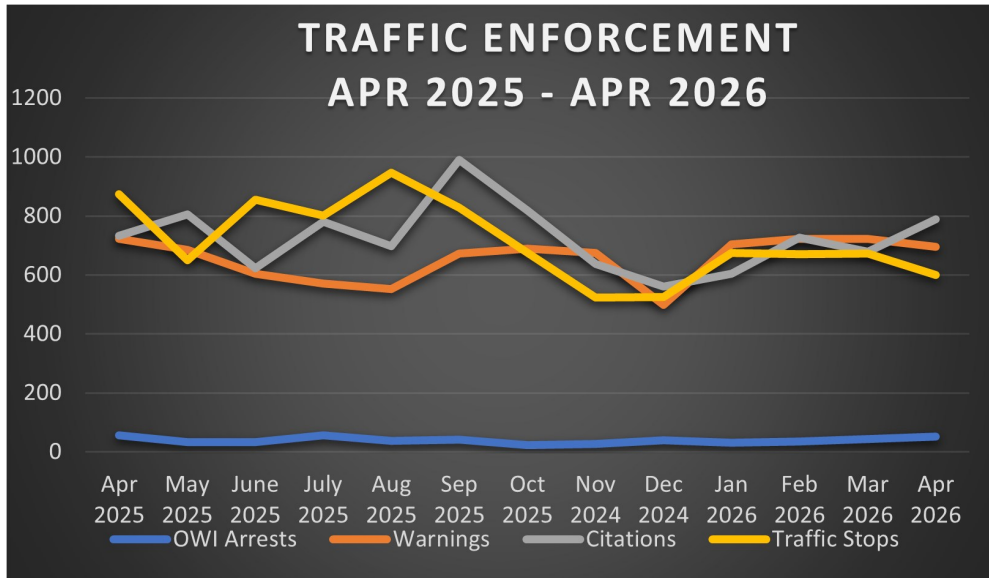
Traffic complaints are the #1 complaint made to the Green Bay Police Department and City Alderpersons. The Police Department is committed to safe travels for motorists, pedestrians, and bicyclists. With a goal of reducing traffic crashes, property damage, injury, and death on Green Bay’s roadways, the Police Department will use a data driven approach for traffic safety. Data analytics from crash data, citizens complaints, and traffic data resources will be used to identify traffic emphasis areas. Each month’s report will be posted on the Police Department’s website and will be presented at the Traffic, Bicycle, and Pedestrian Commission meeting.

April 2026 Crash Data



GREEN BAY POLICE DEPARTMENT TRAFFIC SAFETY PLAN

APRIL 2026 TRAFFIC ENFORCEMENT



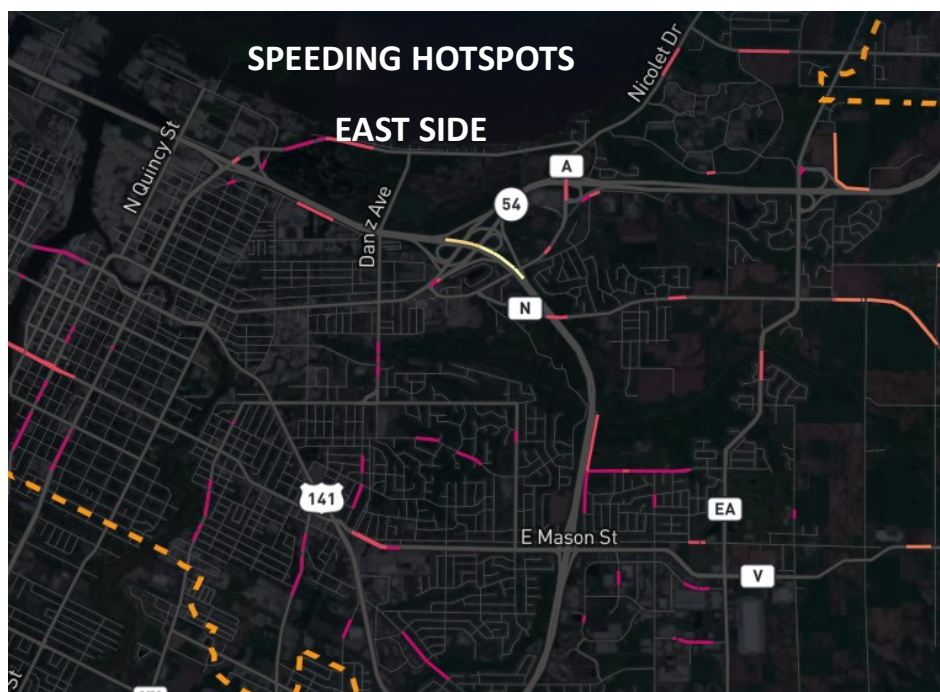
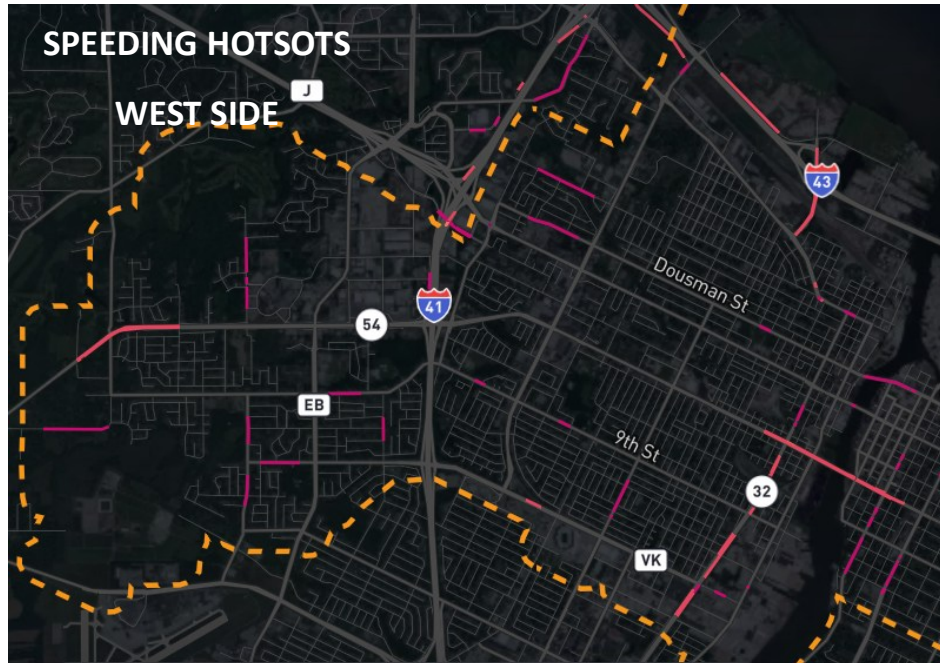
UPCOMING TRAFFIC TASK FORCE DEPLOYMENTS

- * OWI—June 5, 6, 12, 13, 19, 20, 26, 27
- * Speed—June 4, 25
- * Seat Belt—June 9, 23
- * Pedestrian/Bicycle—June 3, 10, 17, 24

GREEN BAY POLICE DEPARTMENT TRAFFIC SAFETY PLAN

TRAFFIC COMPLAINTS

Below are the most recent areas of increased risks from traffic data. To make a traffic complaint, call the Traffic Safety Unit at (920) 448-3212. Residents can also submit an online complaint through the City's Request for Service page. Please leave detailed information including specific times/days of the week, street and block number/intersection, and contact information if you would like follow-up from an officer.

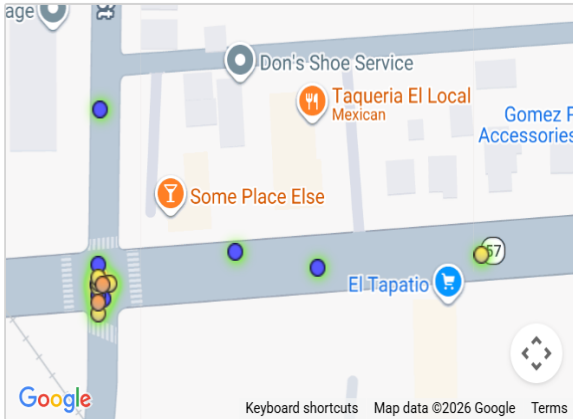


GREEN BAY POLICE DEPARTMENT TRAFFIC SAFETY PLAN

ENFORCEMENT PRIORITY AREAS

Priority areas are determined using a predictive analysis tool through the Wisconsin DOT. The tool uses crash data from the previous three years to determine areas that have a high likelihood of vehicle crashes in the next 30 days.

University Av / Elizabeth St



Analysis Area #1: GREEN BAY (C)

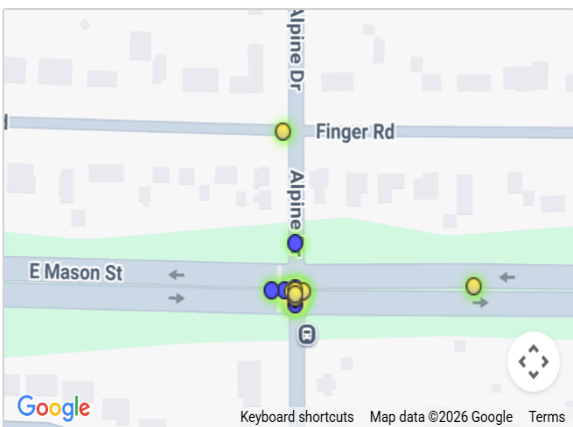
Roadway: 054

Total Crashes: 17

Contributing Factors:

- 65+ Driver (3)
- Teen Driver (2)
- Motorcycle (2)
- Winter Road (2)
- Impaired (2)
- Hit & Run (1)
- Distracted (2)
- Pedestrian (1)

E Mason St / Alpine St



Analysis Area #2: GREEN BAY (C)

Roadway: ALPINE DR

Total Crashes: 13

Contributing Factors:

- Teen Driver (4)
- Bike (1)
- 65+ Driver (1)
- Speed (3)
- Hit & Run (1)
- Winter Road (2)
- Impaired (1)
- Aggressive (2)
- Distracted (1)

University Av / Sturgeon Bay Rd



Analysis Area #3: GREEN BAY (C)

Roadway: UNIVERSITY WAY

Total Crashes: 17

Contributing Factors:

- Teen Driver (5)
- Distracted (1)
- 65+ Driver (4)
- Hit & Run (1)
- Impaired (1)

GREEN BAY POLICE DEPARTMENT TRAFFIC SAFETY PLAN

A message for NHTSA





Report to the
Traffic, Bicycle and Pedestrian Commission
of the City of Green Bay

MEETING DATE

May 18, 2026

PREPARED BY

AGENDA ITEM # E.2

General Business: Consideration with possible action on a request by the Traffic Engineer to remove the traffic signal at Dousman Street and Oneida Street. (District 10)

BACKGROUND

RECOMMENDATION

To approve.

FISCAL IMPACT

ATTACHMENTS

- I. Memo - Dousman at Oneida



Public Works Department
100 North Jefferson Street - Room 300
Green Bay, Wisconsin 54301-5026
www.greenbaywi.gov

Administration | Engineering | Traffic 920.448.3100
Operations 920.448.3535
Parking 920.448.3431
Fax 920.448.3102

TO: Traffic, Bicycle, and Pedestrian Commission

FROM: Traffic Engineer Tom Schuurmans

RE: Traffic Study Dousman Street at Oneida Street

DATE: April 9, 2026

This memorandum summarizes the results of the traffic signal warrant analysis conducted for the intersection of Dousman Street and Oneida Street. The findings will be presented at the April 20, 2026 Traffic, Bicycle, and Pedestrian (TB&P) Commission meeting.

Traffic Signal Warrant Evaluation

Refer to Figure 1 for a summary of the traffic signal warrants as applied to the intersection of Dousman Street and Oneida Street.

Operational Evaluation

A 12-hour turning movement count was conducted in June 2025. The intersection currently experiences approximately **6,300 vehicles entering from all approaches per day**.

For comparison, in 2021 the intersection of Dousman Street and Gray Street was evaluated prior to reconstruction. At that time, traffic volumes were approximately **7,700 vehicles per day**, which did not meet the thresholds required to warrant signal installation or reconstruction as part of that roadway project.

Currently, the signal operates in **flash mode from 9:00 PM to 6:00 AM**, with:

- Flashing **amber** on Dousman Street
- Flashing **red** on Oneida Street

Conclusion

Based on the warrant analysis and operational review, the intersection **does not meet the criteria for a traffic signal**.

Recommendation

- **Remove the existing traffic signal, and**
- **Replace it with an all-way (four-way) stop control**

City of Green Bay Traffic Division

Default Comments
 Change These in The Preferences Window
 Select File/Preference in the Main Scree
 Then Click the Comments Tab

File Name : Oneida at Dousman 7-7
 Site Code : 00000000
 Start Date : 6/30/2025
 Page No : 1

Groups Printed- Unshifted - Bank 1

| Start Time | ONEIDA ST From North | | | | | DOUSMAN ST From East | | | | | ONEIDA ST From South | | | | | DOUSMAN ST From West | | | | | Int. Total |
|--------------|-------------------------|-----------|-----------|----------|------------|-------------------------|------------|-----------|----------|------------|-------------------------|------------|-----------|----------|------------|-------------------------|------------|-----------|----------|------------|------------|
| | Right | Thru | Left | Peds | App. Total | Right | Thru | Left | Peds | App. Total | Right | Thru | Left | Peds | App. Total | Right | Thru | Left | Peds | App. Total | |
| 07:15 AM | 2 | 6 | 1 | 0 | 9 | 1 | 27 | 3 | 0 | 31 | 2 | 4 | 3 | 0 | 9 | 13 | 18 | 0 | 0 | 31 | 80 |
| 07:30 AM | 0 | 9 | 1 | 0 | 10 | 0 | 31 | 7 | 0 | 38 | 1 | 2 | 2 | 0 | 5 | 14 | 20 | 0 | 0 | 34 | 87 |
| 07:45 AM | 0 | 15 | 0 | 0 | 15 | 1 | 39 | 6 | 0 | 46 | 1 | 4 | 0 | 1 | 6 | 4 | 28 | 0 | 0 | 32 | 99 |
| Total | 2 | 30 | 2 | 0 | 34 | 2 | 97 | 16 | 0 | 115 | 4 | 10 | 5 | 1 | 20 | 31 | 66 | 0 | 0 | 97 | 266 |
| 08:00 AM | 1 | 0 | 0 | 0 | 1 | 0 | 4 | 3 | 2 | 9 | 0 | 0 | 0 | 0 | 0 | 2 | 3 | 0 | 0 | 5 | 15 |
| 08:15 AM | 0 | 0 | 0 | 0 | 0 | 0 | 1 | 0 | 0 | 1 | 0 | 0 | 0 | 0 | 0 | 0 | 3 | 1 | 0 | 4 | 5 |
| 08:30 AM | 0 | 0 | 0 | 0 | 0 | 0 | 3 | 0 | 0 | 3 | 0 | 0 | 0 | 0 | 0 | 1 | 1 | 0 | 0 | 2 | 5 |
| 08:45 AM | 0 | 0 | 0 | 0 | 0 | 0 | 3 | 0 | 0 | 3 | 0 | 1 | 0 | 0 | 1 | 0 | 4 | 1 | 0 | 5 | 9 |
| Total | 1 | 0 | 0 | 0 | 1 | 0 | 11 | 3 | 2 | 16 | 0 | 1 | 0 | 0 | 1 | 3 | 11 | 2 | 0 | 16 | 34 |
| 09:00 AM | 0 | 0 | 0 | 0 | 0 | 0 | 17 | 2 | 0 | 19 | 1 | 1 | 1 | 0 | 3 | 5 | 16 | 1 | 2 | 24 | 46 |
| 09:15 AM | 0 | 0 | 0 | 0 | 0 | 0 | 2 | 0 | 0 | 2 | 1 | 0 | 0 | 0 | 1 | 1 | 2 | 0 | 0 | 3 | 6 |
| 09:30 AM | 0 | 5 | 0 | 0 | 5 | 0 | 47 | 10 | 1 | 58 | 4 | 2 | 1 | 1 | 8 | 6 | 19 | 0 | 3 | 28 | 99 |
| 09:45 AM | 0 | 4 | 0 | 0 | 4 | 2 | 58 | 4 | 0 | 64 | 6 | 3 | 2 | 1 | 12 | 3 | 23 | 2 | 0 | 28 | 108 |
| Total | 0 | 9 | 0 | 0 | 9 | 2 | 124 | 16 | 1 | 143 | 12 | 6 | 4 | 2 | 24 | 15 | 60 | 3 | 5 | 83 | 259 |
| 10:00 AM | 2 | 15 | 8 | 1 | 26 | 5 | 35 | 10 | 0 | 50 | 6 | 18 | 10 | 0 | 34 | 12 | 27 | 6 | 0 | 45 | 155 |
| 10:15 AM | 1 | 18 | 7 | 0 | 26 | 7 | 36 | 6 | 0 | 49 | 7 | 16 | 10 | 0 | 33 | 12 | 34 | 10 | 0 | 56 | 164 |
| 10:30 AM | 15 | 20 | 9 | 0 | 44 | 9 | 30 | 12 | 0 | 51 | 12 | 17 | 14 | 0 | 43 | 12 | 35 | 9 | 0 | 56 | 194 |
| 10:45 AM | 15 | 23 | 7 | 0 | 45 | 11 | 34 | 13 | 0 | 58 | 11 | 20 | 8 | 0 | 39 | 13 | 27 | 10 | 0 | 50 | 192 |
| Total | 33 | 76 | 31 | 1 | 141 | 32 | 135 | 41 | 0 | 208 | 36 | 71 | 42 | 0 | 149 | 49 | 123 | 35 | 0 | 207 | 705 |
| 11:00 AM | 8 | 19 | 4 | 0 | 31 | 10 | 29 | 9 | 0 | 48 | 10 | 19 | 11 | 0 | 40 | 12 | 23 | 12 | 1 | 48 | 167 |
| 11:15 AM | 8 | 25 | 9 | 0 | 42 | 7 | 40 | 5 | 0 | 52 | 12 | 17 | 8 | 0 | 37 | 11 | 35 | 11 | 0 | 57 | 188 |
| 11:30 AM | 7 | 26 | 8 | 0 | 41 | 8 | 33 | 11 | 1 | 53 | 8 | 16 | 13 | 0 | 37 | 11 | 29 | 12 | 0 | 52 | 183 |
| 11:45 AM | 12 | 23 | 8 | 0 | 43 | 10 | 28 | 12 | 0 | 50 | 11 | 23 | 13 | 0 | 47 | 14 | 32 | 15 | 0 | 61 | 201 |
| Total | 35 | 93 | 29 | 0 | 157 | 35 | 130 | 37 | 1 | 203 | 41 | 75 | 45 | 0 | 161 | 48 | 119 | 50 | 1 | 218 | 739 |
| 12:00 PM | 7 | 16 | 6 | 0 | 29 | 6 | 29 | 8 | 0 | 43 | 5 | 20 | 10 | 0 | 35 | 9 | 28 | 7 | 0 | 44 | 151 |
| 12:15 PM | 17 | 24 | 8 | 1 | 50 | 15 | 34 | 11 | 0 | 60 | 15 | 18 | 11 | 0 | 44 | 11 | 35 | 14 | 0 | 60 | 214 |
| 12:30 PM | 14 | 24 | 4 | 1 | 43 | 9 | 61 | 13 | 0 | 83 | 10 | 32 | 17 | 0 | 59 | 14 | 29 | 8 | 0 | 51 | 236 |
| 12:45 PM | 4 | 24 | 6 | 0 | 34 | 24 | 65 | 25 | 0 | 114 | 18 | 52 | 13 | 0 | 83 | 11 | 31 | 5 | 0 | 47 | 278 |
| Total | 42 | 88 | 24 | 2 | 156 | 54 | 189 | 57 | 0 | 300 | 48 | 122 | 51 | 0 | 221 | 45 | 123 | 34 | 0 | 202 | 879 |
| 01:00 PM | 8 | 16 | 10 | 0 | 34 | 13 | 66 | 16 | 0 | 95 | 11 | 28 | 16 | 0 | 55 | 17 | 47 | 11 | 0 | 75 | 259 |
| 01:15 PM | 1 | 5 | 0 | 0 | 6 | 1 | 39 | 6 | 0 | 46 | 4 | 10 | 8 | 0 | 22 | 6 | 30 | 2 | 0 | 38 | 112 |
| 01:30 PM | 2 | 4 | 1 | 0 | 7 | 1 | 43 | 7 | 1 | 52 | 6 | 2 | 0 | 0 | 8 | 6 | 27 | 0 | 0 | 33 | 100 |
| 01:45 PM | 0 | 4 | 0 | 0 | 4 | 2 | 42 | 5 | 0 | 49 | 3 | 6 | 6 | 0 | 15 | 7 | 31 | 2 | 0 | 40 | 108 |
| Total | 11 | 29 | 11 | 0 | 51 | 17 | 190 | 34 | 1 | 242 | 24 | 46 | 30 | 0 | 100 | 36 | 135 | 15 | 0 | 186 | 579 |
| 02:00 PM | 0 | 0 | 0 | 0 | 0 | 0 | 37 | 5 | 0 | 42 | 6 | 4 | 2 | 0 | 12 | 5 | 22 | 4 | 1 | 32 | 86 |
| 02:15 PM | 0 | 4 | 0 | 0 | 4 | 0 | 29 | 3 | 0 | 32 | 0 | 11 | 3 | 0 | 14 | 6 | 27 | 2 | 0 | 35 | 85 |
| 02:30 PM | 0 | 1 | 0 | 0 | 1 | 2 | 59 | 2 | 0 | 63 | 6 | 6 | 5 | 0 | 17 | 8 | 23 | 1 | 0 | 32 | 113 |
| 02:45 PM | 2 | 4 | 0 | 0 | 6 | 1 | 50 | 9 | 0 | 60 | 3 | 7 | 7 | 2 | 19 | 1 | 35 | 0 | 0 | 36 | 121 |
| Total | 2 | 9 | 0 | 0 | 11 | 3 | 175 | 19 | 0 | 197 | 15 | 28 | 17 | 2 | 62 | 20 | 107 | 7 | 1 | 135 | 405 |

City of Green Bay Traffic Division

Default Comments
 Change These in The Preferences Window
 Select File/Preference in the Main Scree
 Then Click the Comments Tab

File Name : Oneida at Dousman 7-7
 Site Code : 00000000
 Start Date : 6/30/2025
 Page No : 2

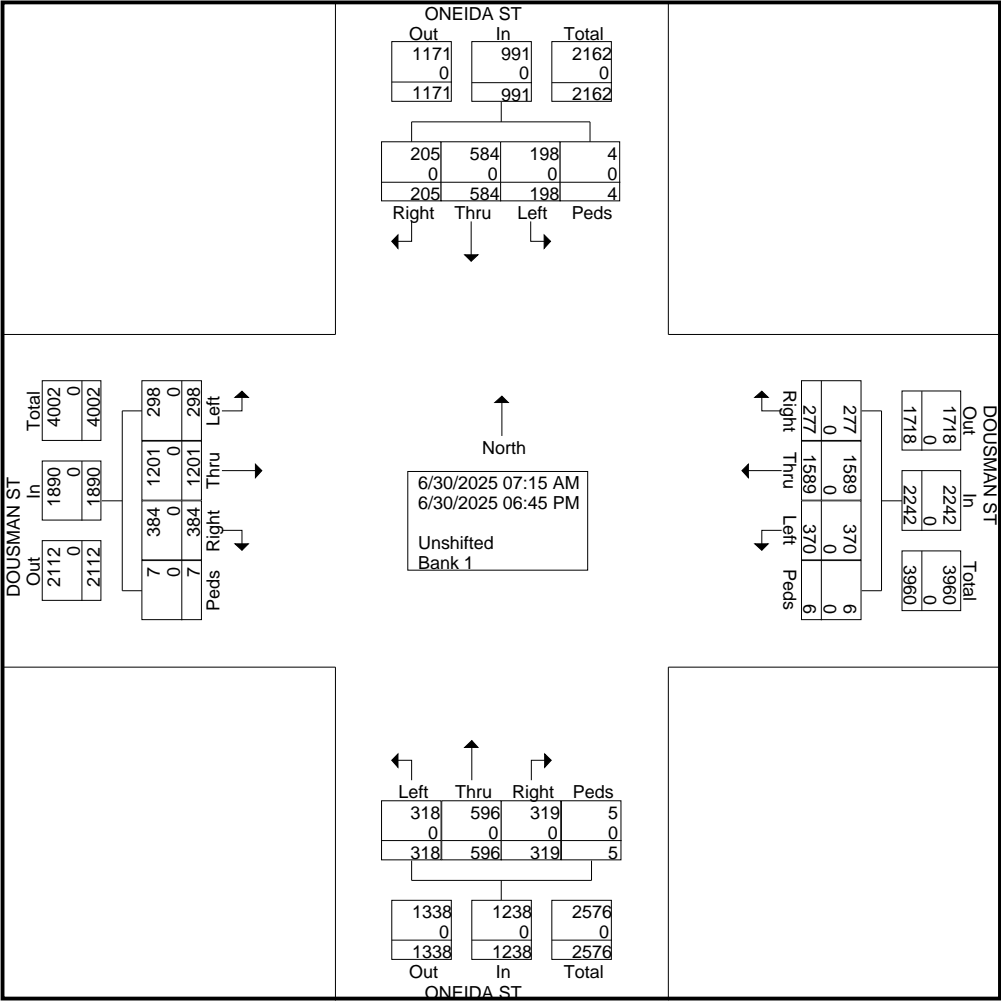
Groups Printed- Unshifted - Bank 1

| Start Time | ONEIDA ST From North | | | | | DOUSMAN ST From East | | | | | ONEIDA ST From South | | | | | DOUSMAN ST From West | | | | | Int. Total |
|--------------------|-------------------------|-------------|------------|------------|-------------|-------------------------|-------------|-------------|------------|-------------|-------------------------|-------------|-------------|------------|-------------|-------------------------|-------------|-------------|------------|-------------|-------------|
| | Right | Thru | Left | Peds | App. Total | Right | Thru | Left | Peds | App. Total | Right | Thru | Left | Peds | App. Total | Right | Thru | Left | Peds | App. Total | |
| 03:00 PM | 0 | 2 | 0 | 0 | 2 | 1 | 34 | 5 | 0 | 40 | 6 | 4 | 3 | 0 | 13 | 4 | 23 | 0 | 0 | 27 | 82 |
| 03:15 PM | 1 | 3 | 0 | 0 | 4 | 0 | 42 | 1 | 0 | 43 | 3 | 4 | 3 | 0 | 10 | 2 | 35 | 1 | 0 | 38 | 95 |
| 03:30 PM | 0 | 0 | 1 | 0 | 1 | 0 | 49 | 8 | 0 | 57 | 7 | 10 | 3 | 0 | 20 | 6 | 35 | 1 | 0 | 42 | 120 |
| 03:45 PM | 2 | 12 | 3 | 0 | 17 | 3 | 59 | 9 | 1 | 72 | 7 | 5 | 5 | 0 | 17 | 6 | 28 | 5 | 0 | 39 | 145 |
| Total | 3 | 17 | 4 | 0 | 24 | 4 | 184 | 23 | 1 | 212 | 23 | 23 | 14 | 0 | 60 | 18 | 121 | 7 | 0 | 146 | 442 |
| 04:00 PM | 6 | 26 | 11 | 0 | 43 | 14 | 35 | 12 | 0 | 61 | 9 | 31 | 11 | 0 | 51 | 10 | 37 | 12 | 0 | 59 | 214 |
| 04:15 PM | 18 | 35 | 6 | 0 | 59 | 15 | 40 | 13 | 0 | 68 | 11 | 20 | 9 | 0 | 40 | 16 | 40 | 20 | 0 | 76 | 243 |
| 04:30 PM | 4 | 21 | 8 | 0 | 33 | 13 | 23 | 12 | 0 | 48 | 5 | 12 | 8 | 0 | 25 | 7 | 22 | 10 | 0 | 39 | 145 |
| 04:45 PM | 13 | 33 | 14 | 1 | 61 | 9 | 41 | 9 | 0 | 59 | 10 | 25 | 11 | 0 | 46 | 15 | 25 | 8 | 0 | 48 | 214 |
| Total | 41 | 115 | 39 | 1 | 196 | 51 | 139 | 46 | 0 | 236 | 35 | 88 | 39 | 0 | 162 | 48 | 124 | 50 | 0 | 222 | 816 |
| 05:00 PM | 0 | 22 | 8 | 0 | 30 | 16 | 30 | 10 | 0 | 56 | 11 | 18 | 7 | 0 | 36 | 6 | 31 | 9 | 0 | 46 | 168 |
| 05:15 PM | 9 | 13 | 7 | 0 | 29 | 9 | 29 | 10 | 0 | 48 | 12 | 14 | 8 | 0 | 34 | 11 | 30 | 10 | 0 | 51 | 162 |
| 05:30 PM | 6 | 16 | 4 | 0 | 26 | 7 | 29 | 8 | 0 | 44 | 9 | 12 | 11 | 0 | 32 | 13 | 27 | 10 | 0 | 50 | 152 |
| 05:45 PM | 0 | 14 | 7 | 0 | 21 | 9 | 32 | 12 | 0 | 53 | 10 | 17 | 5 | 0 | 32 | 11 | 27 | 15 | 0 | 53 | 159 |
| Total | 15 | 65 | 26 | 0 | 106 | 41 | 120 | 40 | 0 | 201 | 42 | 61 | 31 | 0 | 134 | 41 | 115 | 44 | 0 | 200 | 641 |
| 06:00 PM | 6 | 11 | 4 | 0 | 21 | 8 | 22 | 9 | 0 | 39 | 5 | 16 | 7 | 0 | 28 | 9 | 29 | 13 | 0 | 51 | 139 |
| 06:15 PM | 6 | 11 | 6 | 0 | 23 | 5 | 28 | 9 | 0 | 42 | 7 | 18 | 10 | 0 | 35 | 8 | 23 | 11 | 0 | 42 | 142 |
| 06:30 PM | 0 | 17 | 10 | 0 | 27 | 13 | 24 | 9 | 0 | 46 | 12 | 13 | 11 | 0 | 36 | 6 | 26 | 14 | 0 | 46 | 155 |
| 06:45 PM | 8 | 14 | 12 | 0 | 34 | 10 | 21 | 11 | 0 | 42 | 15 | 18 | 12 | 0 | 45 | 7 | 19 | 13 | 0 | 39 | 160 |
| Total | 20 | 53 | 32 | 0 | 105 | 36 | 95 | 38 | 0 | 169 | 39 | 65 | 40 | 0 | 144 | 30 | 97 | 51 | 0 | 178 | 596 |
| Grand Total | 205 | 584 | 198 | 4 | 991 | 277 | 1589 | 370 | 6 | 2242 | 319 | 596 | 318 | 5 | 1238 | 384 | 1201 | 298 | 7 | 1890 | 6361 |
| Apprch % | 20.7 | 58.9 | 20 | 0.4 | | 12.4 | 70.9 | 16.5 | 0.3 | | 25.8 | 48.1 | 25.7 | 0.4 | | 20.3 | 63.5 | 15.8 | 0.4 | | |
| Total % | 3.2 | 9.2 | 3.1 | 0.1 | 15.6 | 4.4 | 25 | 5.8 | 0.1 | 35.2 | 5 | 9.4 | 5 | 0.1 | 19.5 | 6 | 18.9 | 4.7 | 0.1 | 29.7 | |
| Unshifted | 205 | 584 | 198 | 4 | 991 | 277 | 1589 | 370 | 6 | 2242 | 319 | 596 | 318 | 5 | 1238 | 384 | 1201 | 298 | 7 | 1890 | 6361 |
| % Unshifted | 100 | 100 | 100 | 100 | 100 | 100 | 100 | 100 | 100 | 100 | 100 | 100 | 100 | 100 | 100 | 100 | 100 | 100 | 100 | 100 | 100 |
| Bank 1 | 0 | 0 | 0 | 0 | 0 | 0 | 0 | 0 | 0 | 0 | 0 | 0 | 0 | 0 | 0 | 0 | 0 | 0 | 0 | 0 | 0 |
| % Bank 1 | 0 | 0 | 0 | 0 | 0 | 0 | 0 | 0 | 0 | 0 | 0 | 0 | 0 | 0 | 0 | 0 | 0 | 0 | 0 | 0 | 0 |

City of Green Bay Traffic Division

Default Comments
 Change These in The Preferences Window
 Select File/Preference in the Main Scree
 Then Click the Comments Tab

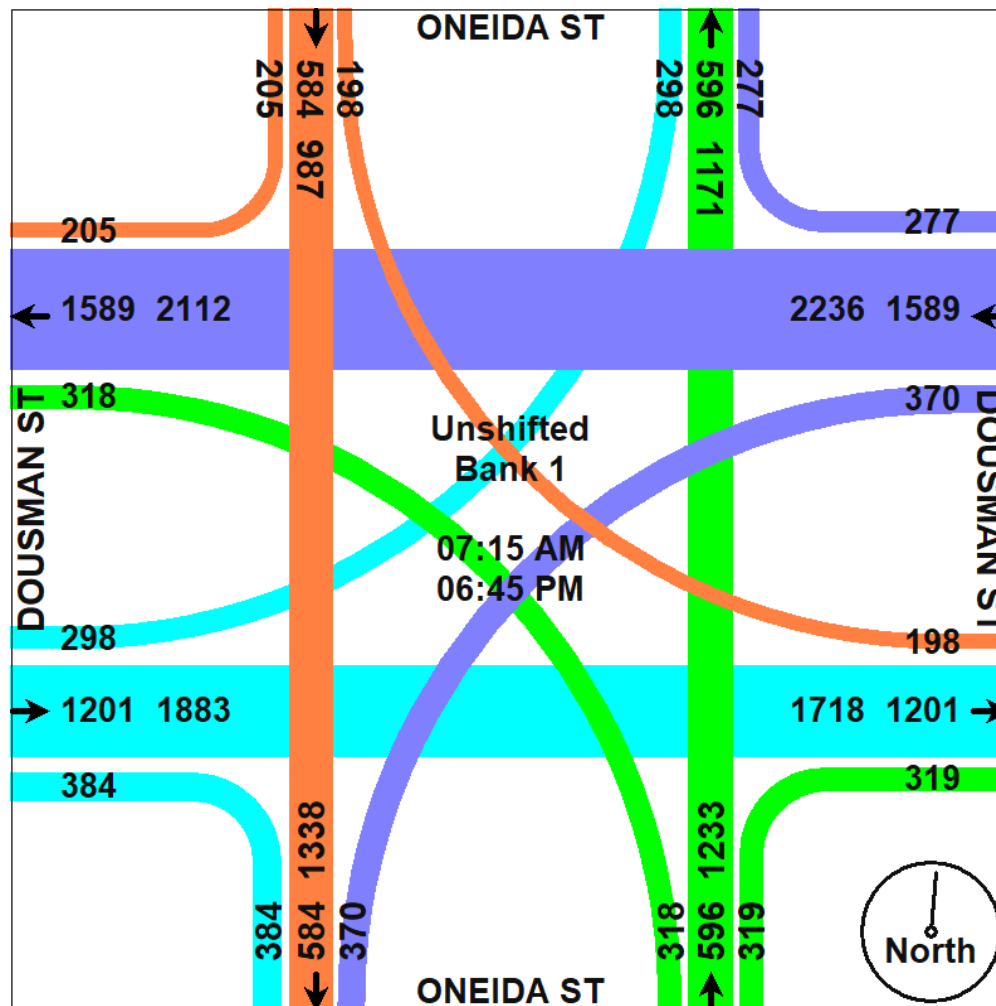
File Name : Oneida at Dousman 7-7
 Site Code : 00000000
 Start Date : 6/30/2025
 Page No : 3



City of Green Bay Traffic Division

Default Comments
 Change These in The Preferences Window
 Select File/Preference in the Main Scree
 Then Click the Comments Tab

File Name : Oneida at Dousman 7-7
 Site Code : 00000000
 Start Date : 6/30/2025
 Page No : 4



City of Green Bay Traffic Division

Default Comments
 Change These in The Preferences Window
 Select File/Preference in the Main Scree
 Then Click the Comments Tab

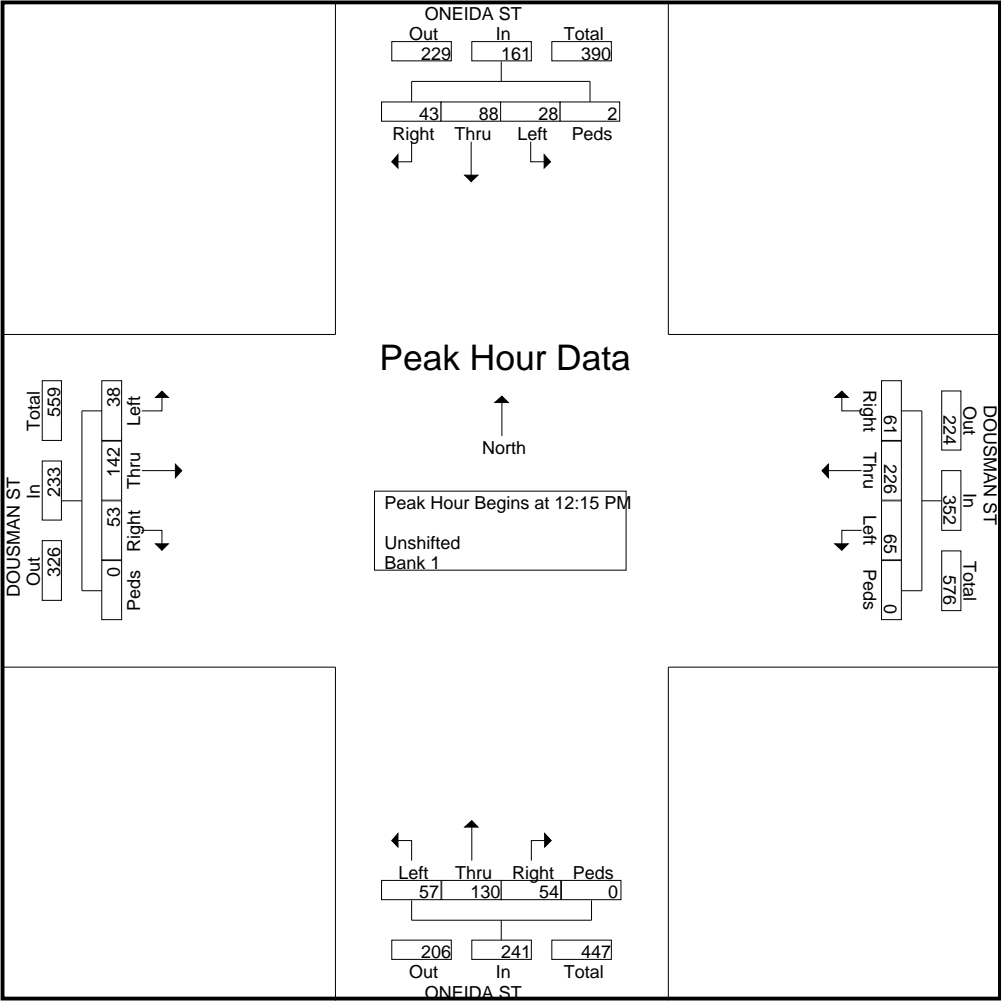
File Name : Oneida at Dousman 7-7
 Site Code : 00000000
 Start Date : 6/30/2025
 Page No : 5

| Start Time | ONEIDA ST From North | | | | | DOUSMAN ST From East | | | | | ONEIDA ST From South | | | | | DOUSMAN ST From West | | | | | Int. Total |
|--|-------------------------|------|------|------|------------|-------------------------|------|------|------|------------|-------------------------|------|------|------|------------|-------------------------|------|------|------|------------|------------|
| | Right | Thru | Left | Peds | App. Total | Right | Thru | Left | Peds | App. Total | Right | Thru | Left | Peds | App. Total | Right | Thru | Left | Peds | App. Total | |
| Peak Hour Analysis From 07:15 AM to 06:45 PM - Peak 1 of 1 | | | | | | | | | | | | | | | | | | | | | |
| Peak Hour for Entire Intersection Begins at 12:15 PM | | | | | | | | | | | | | | | | | | | | | |
| 12:15 PM | 17 | 24 | 8 | 1 | 50 | 15 | 34 | 11 | 0 | 60 | 15 | 18 | 11 | 0 | 44 | 11 | 35 | 14 | 0 | 60 | 214 |
| 12:30 PM | 14 | 24 | 4 | 1 | 43 | 9 | 61 | 13 | 0 | 83 | 10 | 32 | 17 | 0 | 59 | 14 | 29 | 8 | 0 | 51 | 236 |
| 12:45 PM | 4 | 24 | 6 | 0 | 34 | 24 | 65 | 25 | 0 | 114 | 18 | 52 | 13 | 0 | 83 | 11 | 31 | 5 | 0 | 47 | 278 |
| 01:00 PM | 8 | 16 | 10 | 0 | 34 | 13 | 66 | 16 | 0 | 95 | 11 | 28 | 16 | 0 | 55 | 17 | 47 | 11 | 0 | 75 | 259 |
| Total Volume | 43 | 88 | 28 | 2 | 161 | 61 | 226 | 65 | 0 | 352 | 54 | 130 | 57 | 0 | 241 | 53 | 142 | 38 | 0 | 233 | 987 |
| % App. Total | 26.7 | 54.7 | 17.4 | 1.2 | | 17.3 | 64.2 | 18.5 | 0 | | 22.4 | 53.9 | 23.7 | 0 | | 22.7 | 60.9 | 16.3 | 0 | | |
| PHF | .632 | .917 | .700 | .500 | .805 | .635 | .856 | .650 | .000 | .772 | .750 | .625 | .838 | .000 | .726 | .779 | .755 | .679 | .000 | .777 | .888 |

City of Green Bay Traffic Division

Default Comments
 Change These in The Preferences Window
 Select File/Preference in the Main Scree
 Then Click the Comments Tab

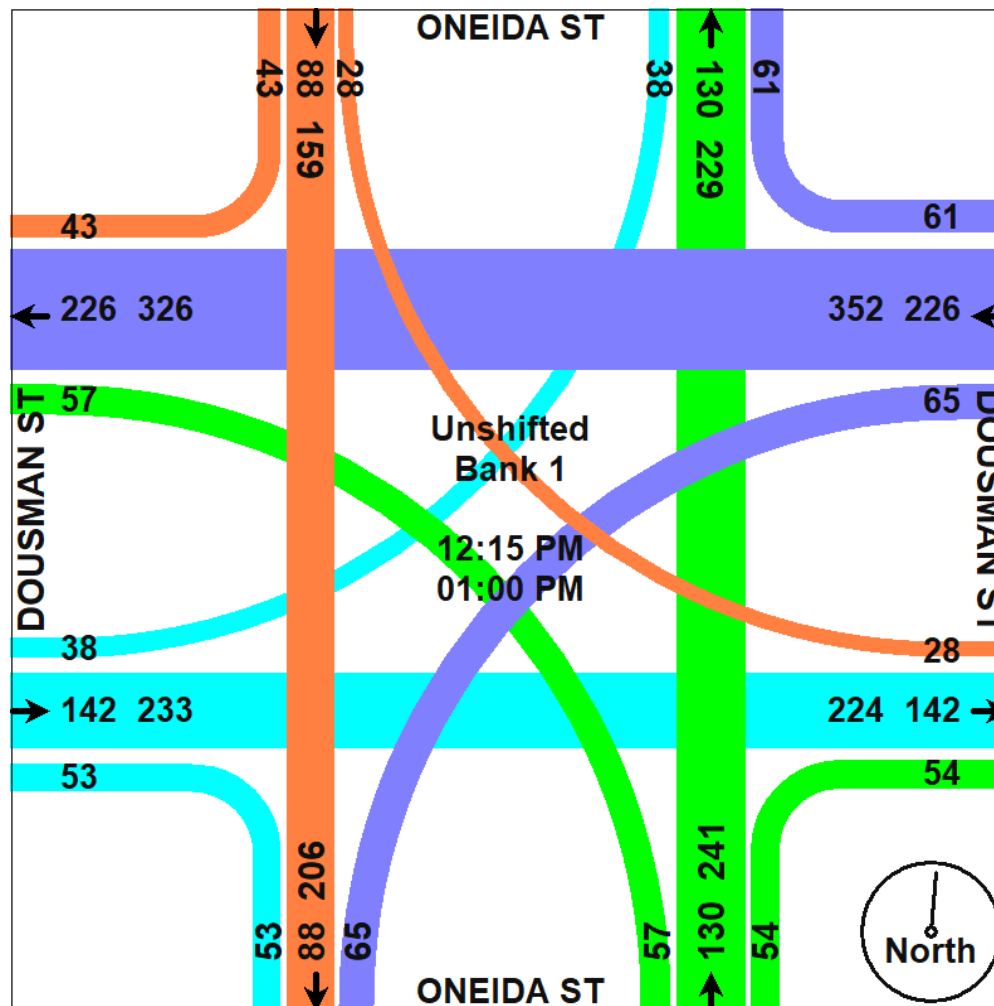
File Name : Oneida at Dousman 7-7
 Site Code : 00000000
 Start Date : 6/30/2025
 Page No : 6



City of Green Bay Traffic Division

Default Comments
Change These in The Preferences Window
Select File/Preference in the Main Scree
Then Click the Comments Tab

File Name : Oneida at Dousman 7-7
Site Code : 00000000
Start Date : 6/30/2025
Page No : 7



Wisconsin Department of Transportation Traffic Signal Warrant Summary Worksheet

100%

The Worksheet(s) attached are provided as an attachment to the Engineering Investigation Study for:

Intersection: Dousman Street at Oeida Street

County: Brown

City: Green Bay WI

Major Street: Dousman Street

Minor Street: Oneida Street

Critical Approach Speed: 25 mph

Critical Approach Speed: 25 mph

Lanes: 2 or more lanes

Lanes: 2 or more lanes

% Right Turns Included

In built-up area of isolated community of < 10,000 population? No

From North (SB) 0%

Total number of approaches at intersection? 4 or more

From East (WB) 0%

If it is a "T" intersection, inflate minor threshold to 150%? Yes

From South (NB) 0%

Manually set volume level? No

From West (EB) 0%

Analysis based on **EXISTING** volume data.

| Date | Day of the Week | Time (HH:MM) | | | |
|------|-----------------|--------------|---------|----|---------|
| | | From | AM / PM | To | AM / PM |
| | | | | | |

| Warrant Evaluation Summary | Warrant Met: |
|--|--------------|
| Warrant 1: Eight - Hour Vehicular Volume | No |
| Condition A: Minimum Vehicular Volume | No |
| Condition B: Interruption of Continuous Traffic | No |
| Condition C: Combination: 80% of A and B | No |
| Warrant 2: Four-Hour Volume | No |
| Warrant 3: Peak Hour Volume | No |
| Warrant 4: Pedestrian Volume | N/A |
| Criterion A: Four-Hour | |
| Criterion B: Peak-Hour | |
| Warrant 5: School Crossing | N/A |
| Warrant 6: Coordinated Signal System | N/A |
| Warrant 7: Crash Experience | No |
| Warrant 8: Roadway Network | No |
| Warrant 9: Intersection Near a Grade Crossing | N/A |

Warrant Analysis Conducted By:

Name: Tom Schuurmans - Traffic Technician

Agency: City of Green Bay

Date: 7/8/2021

Warrant 1: Eight - Hour Vehicular Volume

100%

Warrant Evaluated? Yes

| Condition A : Min. Veh. Volume | | |
|-----------------------------------|------|-----|
| Volume Level | 100% | 80% |
| Major Rd. Req | 600 | 480 |
| Minor Rd. Req | 300 | 240 |
| Number of Hours | 0 | 0 |

Satisfied? No

| Condition B: Interruption of Continuous Traffic | | |
|--|------|-----|
| Volume Level | 100% | 80% |
| Major Rd. Req | 900 | 720 |
| Minor Rd. Req | 150 | 120 |
| Number of Hours | 0 | 0 |

Satisfied? No

| Condition C: Combination of A & B at 80% | | |
|---|--|--|
|---|--|--|

Satisfied? No

Warrant Satisfied? No

Manually Set To:

| 6:00 AM | | Enter Start Time (Military Time) (HH:MM) | | | Total |
|-------------|-------|--|-----------------------------|-----------------------------|-------|
| Time Period | From | To | Major Road: Both App. (VPH) | Minor Road: High App. (VPH) | |
| 1 | 6:00 | 7:00 | 0 | 0 | 0 |
| 2 | 7:00 | 8:00 | 53 | 115 | 168 |
| 3 | 8:00 | 9:00 | 2 | 14 | 16 |
| 4 | 9:00 | 10:00 | 31 | 142 | 173 |
| 5 | 10:00 | 11:00 | 289 | 208 | 497 |
| 6 | 11:00 | 12:00 | 318 | 215 | 533 |
| 7 | 12:00 | 13:00 | 375 | 300 | 675 |
| 8 | 13:00 | 14:00 | 151 | 241 | 392 |
| 9 | 14:00 | 15:00 | 71 | 197 | 268 |
| 10 | 15:00 | 16:00 | 84 | 211 | 295 |
| 11 | 16:00 | 17:00 | 357 | 239 | 596 |
| 12 | 17:00 | 18:00 | 241 | 201 | 442 |
| 13 | 18:00 | 19:00 | 249 | 182 | 431 |
| 14 | 19:00 | 20:00 | 0 | 0 | 0 |
| 15 | 20:00 | 21:00 | 0 | 0 | 0 |
| 16 | 21:00 | 22:00 | 0 | 0 | 0 |

Warrant 2: Four-Hour Volume

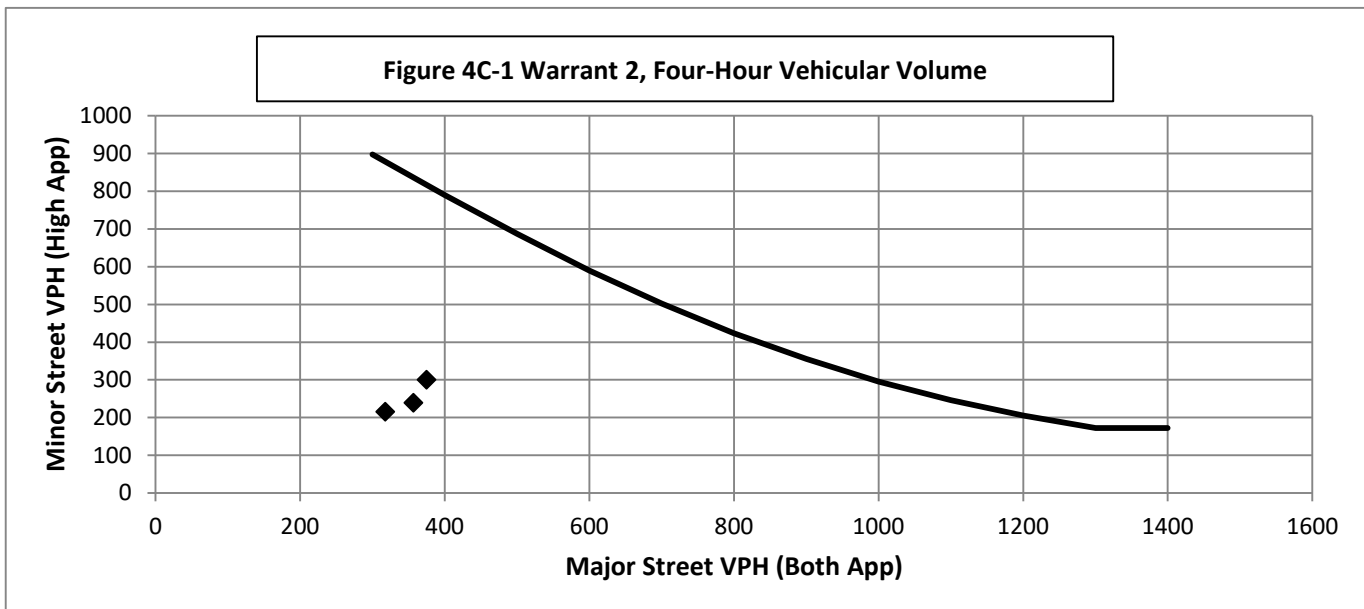
100%

Warrant Evaluated? Yes

Warrant Satisfied? No

Manually Set To:

| | | | | |
|-----------------|-------|-------|-------|------|
| Hour Start | 12:00 | 16:00 | 11:00 | #N/A |
| Major Road Vol. | 375 | 357 | 318 | #N/A |
| Minor Road Vol. | 300 | 239 | 215 | #N/A |



Warrant 3: Peak Hour Volume

100%

Warrant Evaluated? Yes

Warrant Satisfied? No

Manually Set To:

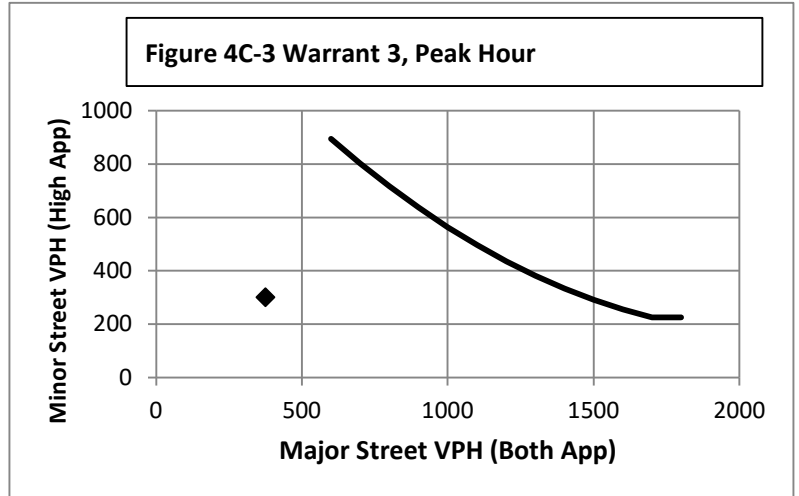
Condition justifying use of warrant:

Near Hospital and Big Box Development

| Criteria | | Met? |
|-------------------------------|-----|------|
| Delay on Minor Approach | 5 | No |
| Volume on Minor Approach | 150 | No |
| Total Entering Volume (veh/h) | 800 | |

Manually Set Peak Hour?

| Peak Hour | Major Road Vol. (Both App.) | Minor Road Vol. (High App.) |
|-----------|--------------------------------|--------------------------------|
| 12:00 | 375 | 300 |



Warrant 4: Pedestrian Volume

100%

Warrant Evaluated? No

Warrant Satisfied? N/A

Manually Set To:

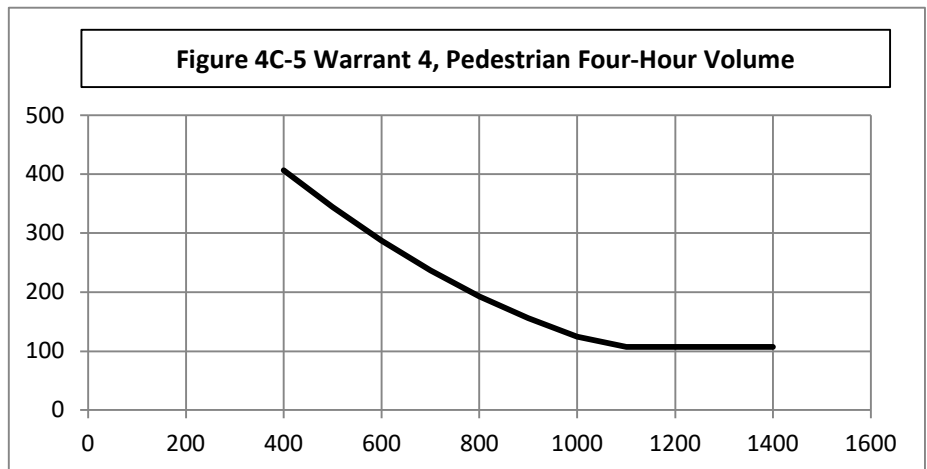
Criterion A: Four Hour

| Hour (Start) | Pedestrian Volume | Major Road Vol. |
|--------------|-------------------|-----------------|
| | | 0 |
| | | 0 |
| | | 0 |
| | | 0 |

Manually Set Major Rd Vol?

Avg. walk speed less than 3.5 ft/s?

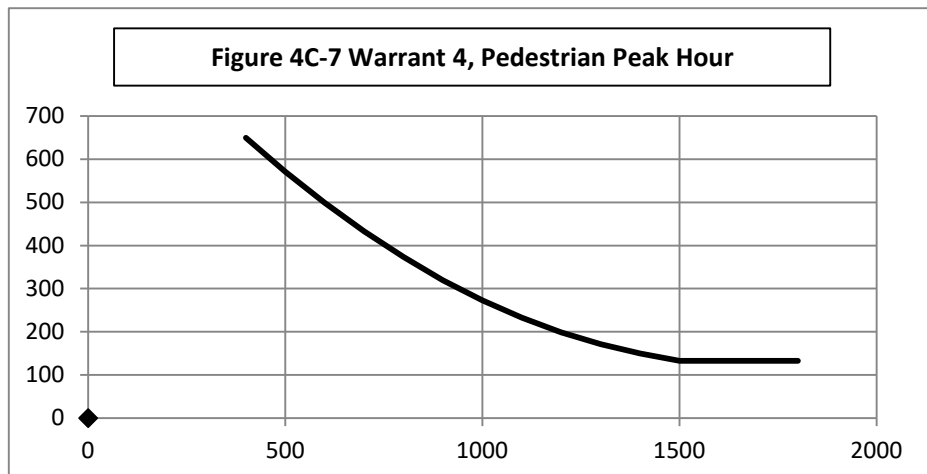
Criterion A Satisfied?



Criterion B: Peak Hour

| Peak Hour | Pedestrian Vol. | Major Road Vol. |
|-----------|-----------------|-----------------|
| 0:00 | 0 | 0 |

Criterion B Satisfied?





Report to the
Traffic, Bicycle and Pedestrian Commission
of the City of Green Bay

MEETING DATE

May 18, 2026

PREPARED BY

AGENDA ITEM # E.3

General Business: Consideration with possible action on a request by the Traffic Engineer to remove the parking restrictions adjacent to Elmore Elementary School (615 Ethel Avenue). (District 10)

BACKGROUND

RECOMMENDATION

To approve.

FISCAL IMPACT

ATTACHMENTS

- I. Elmore



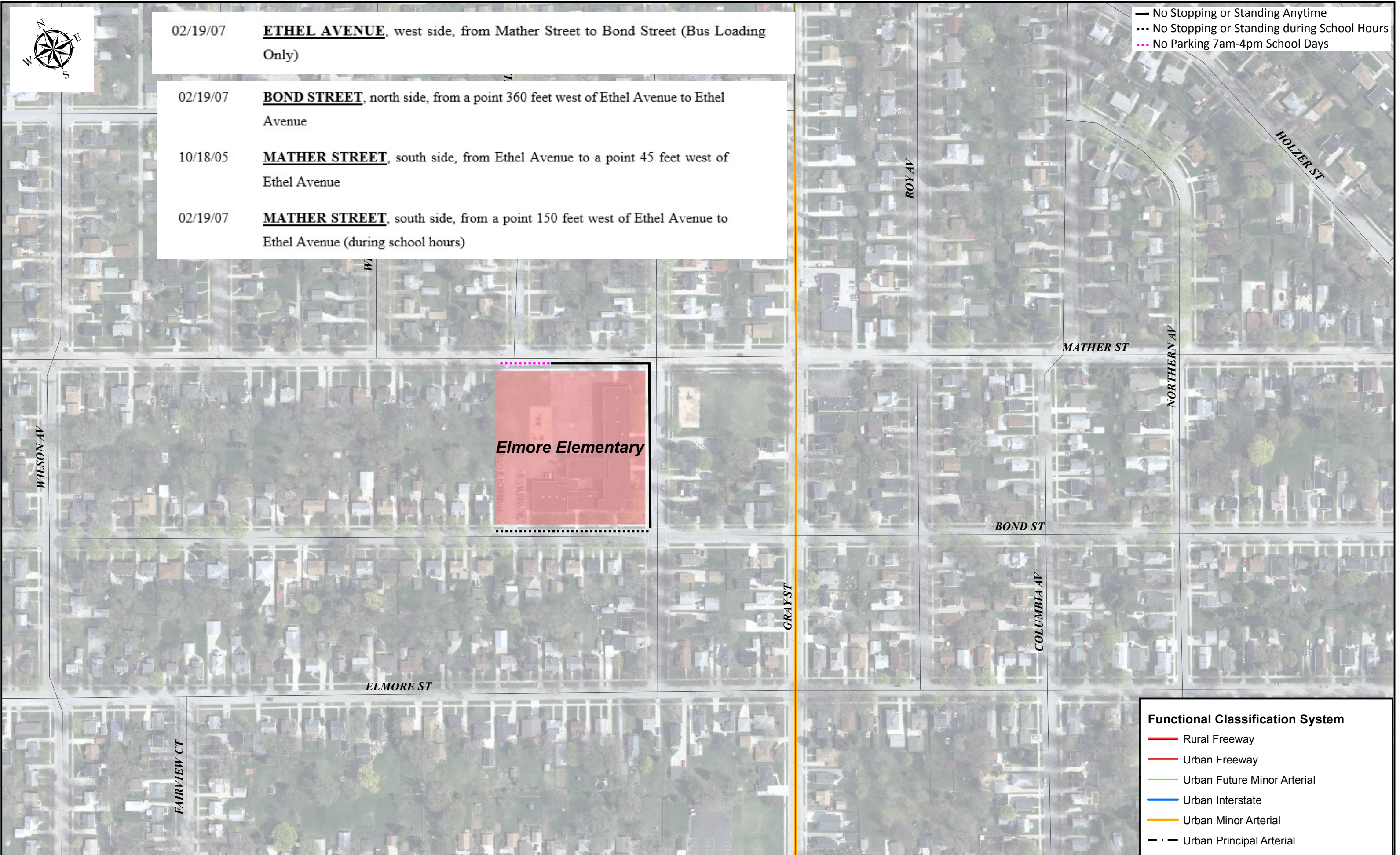
02/19/07 **ETHEL AVENUE**, west side, from Mather Street to Bond Street (Bus Loading Only)

02/19/07 **BOND STREET**, north side, from a point 360 feet west of Ethel Avenue to Ethel Avenue

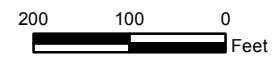
10/18/05 **MATHER STREET**, south side, from Ethel Avenue to a point 45 feet west of Ethel Avenue

02/19/07 **MATHER STREET**, south side, from a point 150 feet west of Ethel Avenue to Ethel Avenue (during school hours)

- No Stopping or Standing Anytime
- ... No Stopping or Standing during School Hours
- ... No Parking 7am-4pm School Days



Elmore Elementary





Report to the
Traffic, Bicycle and Pedestrian Commission
of the City of Green Bay

MEETING DATE

May 18, 2026

PREPARED BY

AGENDA ITEM # E.4

General Business: Consideration with possible action on a request by the Traffic Engineer to remove the parking restrictions adjacent to MacArthur Elementary School (1331 Hobart Drive). (District II)

BACKGROUND

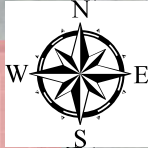
RECOMMENDATION

To approve

FISCAL IMPACT

ATTACHMENTS

- I. MacArthur

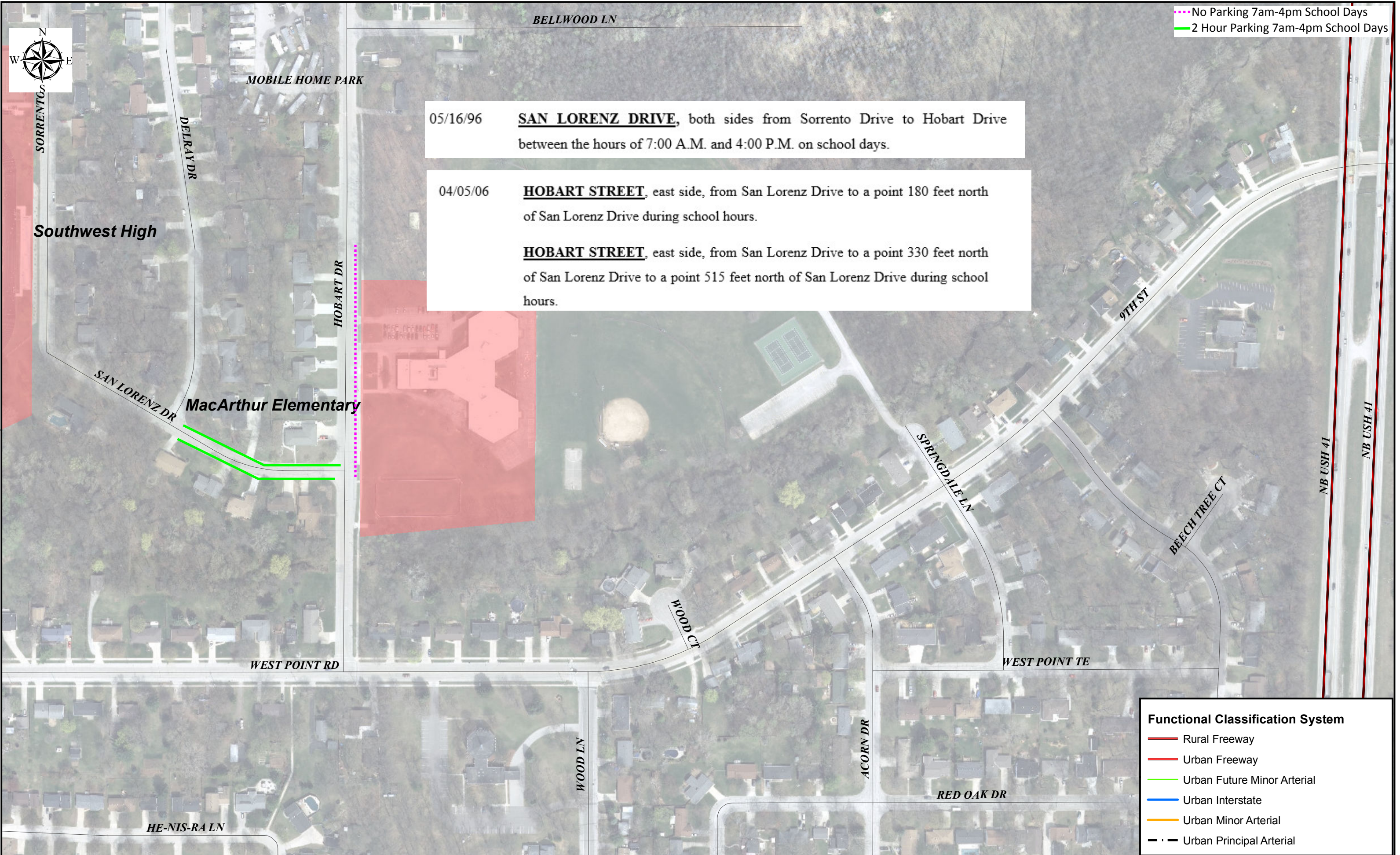


⋯ No Parking 7am-4pm School Days
— 2 Hour Parking 7am-4pm School Days

05/16/96 **SAN LORENZ DRIVE**, both sides from Sorrento Drive to Hobart Drive between the hours of 7:00 A.M. and 4:00 P.M. on school days.

04/05/06 **HOBART STREET**, east side, from San Lorenz Drive to a point 180 feet north of San Lorenz Drive during school hours.

HOBART STREET, east side, from San Lorenz Drive to a point 330 feet north of San Lorenz Drive to a point 515 feet north of San Lorenz Drive during school hours.



Functional Classification System

- Rural Freeway
- Urban Freeway
- Urban Future Minor Arterial
- Urban Interstate
- Urban Minor Arterial
- - - Urban Principal Arterial

